

**May
2019**

The Link

The Newsletter of First United Methodist Church, Buckhannon WV

52 S. Florida St. Buckhannon, WV 26201

304-472-9494

fumc26201@gmail.com

www.firstchurchum.com



Strawberry Pancakes during Festival!

**Friday & Saturday, May 17 & 18
7 am to 12 noon**

Godwin Fellowship Hall

\$7 per person / \$4 for children

... with pancakes, sausage, fresh
strawberries, maple & strawberry syrup!
Invite your friends, family & neighbors
to enjoy pancakes. Take-outs available.

**Proceeds benefit the Upshur Parish
(youth/mission projects) and the Upshur
Christmas Store*



CHURCH OFFICES WILL BE CLOSED MAY 27TH



CHURCH NIGHT OUT

Good food and fellowship with church family members!

**Thursday, May 30 at 6 pm
at Legends Restaurant (beside GoMart)**

If you would like to contribute to FUMC online,
please visit our webpage
www.firstchurchum.com and look for "DONATE."







UNITED METHODIST WOMEN 12-HOUR BASEMENT SALE



**Set-up on Mon., May 6th, 8 am - ?
Selling on Tues., May 7th,
8 am – 8 pm**

It's magic! The United Methodist Women can
turn your unwanted STUFF into MONEY to
support missions! Bring your clean used clothing,
household items, knick-knacks, toys, etc., to the
church any time after
Monday, April 29th.



Sunday	Monday	Tuesday	Wednesday	Thursday	Friday	Saturday
			1 + Early Birds - Library 7:00am Exercise Group - #18E 9:00am Study Group - GFH - 7pm	2 + UMW - GFH 7:00pm	3 +	4 +
5 + Sunday School 9:30am Worship - Sanctuary 10:40am Paint Party - GFH 2:00pm	6 + Basement Sale Setup - GFH Exercise Group - #18E 9:00am	7 + Basement Sale - GFH - 8am Early Birds - Library 8:00am Bell Choir - Sanc 6:00pm Chancel Choir - GFH 7:00pm	8 + Basement Sale - GFH Exercise Group - #18E 9:00am Study Group - GFH - 7pm	9 +	10 + 11 +  Horse & Carriage Parade – May 11 – 3 pm	
12 Mother's Day + Sunday School 9:30am Worship - Sanctuary 10:40am 	13 + Exercise Group - #18E 9:00am	14 + Early Birds - Library 8:00am Bell Choir - Sanc 6:00pm Chancel Choir - GFH 7:00pm	15 + STRAWBERRY FESTIVAL Exercise Group - #18E 9:00am Morning Circle - Fleming Lounge 9:30am Study Group - GFH - 7pm	16 + STRAWBERRY FESTIVAL	17 + STRAWBERRY FESTIVAL Strawberry Pancakes - GFH - 7am 	18 + STRAWBERRY FESTIVAL Strawberry Pancakes - GFH - 7am 
19 + STRAWBERRY FESTIVAL United Methodist Men - GFH 8:00am Sunday School 9:30am Worship - Sanctuary 10:40am Youth - Sam's Pizza 6:00pm	20 + Exercise Group - #18E 9:00am Cub Pack Meeting - GFH 7:00pm	21 + Early Birds - Library 8:00am Bell Choir - Sanc 6:00pm Chancel Choir - GFH 7:00pm	22 + Exercise Group - #18E 9:00am Study Group - GFH - 7pm	23 +	24 +	25 +
26 + Sunday School 9:30am Worship - Sanctuary 10:40am	27 Memorial Day + OFFICE CLOSED 	28 + Early Birds - Library 8:00am Bell Choir - Sanc 6:00pm Chancel Choir - GFH 7:00pm	29 + Exercise Group - #18E 9:00am	30 Ascension Day + UMW Exec - Lib 4:30pm CHURCH NIGHT OUT - LEGENDS - 6PM	31 +	

HAPPY BIRTHDAY

1 K Almond
6 Jane Godwin
7 Donna Carpenter
11 Morgan Gifford
12 Rodney Godwin
13 Helen Reger
14 Calvin McCutcheon
16 Cheri Green

17 Zachary Reger
18 Paul Kennedy
19 Tori Gifford
20 William O'Brien
21 Charles Helmick
23 Isaac Casto
25 Elizabeth Edwards
27 Mateal Poling
29 Judy Warner

MAY GREETERS

May 5	Lewis & Diana Simmons
May 12	Jake & Beverley Reger
May 19	Shea & Keri Phillips
May 26	Carrie Wallace & Herb Coston

MAY USHERS

Katherine Huffman (head), Steve Atkins, Randy Clark,
 Matt Leventry, Dale Shannon



MAY'S LOOSE CHANGE OFFERING BENEFITS YOUTH KANSAS CITY TRIP!

MAY is "CANNED FRUITS" Month, the monthly collection for the Parish House & sponsored by the Micah Outreach Ministry Team. Please leave your gift in Linger Hall on Sunday or leave at the church office.



College Sunday School Class - trip to
Pittsburgh on March 30



Children and Youth are in action! Youth cleaned tables with shaving cream and kids found treasures at the Egg Hunt.

PRAYER SHAWL MINISTRY



The First United Methodist Prayer Shawl Ministry group met at the home of Lynne Petrosky in April. The group is composed of church members and friends from the local community. The mission of the group is to knit or crochet prayer shawls for people who are ill or may be in need of comfort and/or peace.

The women of the group pray that God may grant the recipients of these shawls comfort, and strength as they wear these shawls and may they feel the loving arms of our Lord around them. Thank you to those people who have donated yarn or money to the ministry. Anyone IS welcome to join or participate in the group.

Pictured: first row-Sandra McCutcheon, Jane Corathers, Nancy Hefner, Debbie Hinkle
Second row-Lynne Petrosky, Patty McComas, Ellen Nickell, Yvonne Foster, Tina Horstman



United Methodist Women



Barry Moll, Retired UM Pastor Daya Wright, local attorney Lisa Cain, financial consultant Leaders of WV Hospice

An Elder Care Information and Planning Event held April 7 was a huge success based on comments and attendance that surpassed expectations. Originally conceived by the UMW program planning committee, it was expanded to include the entire community. Nurture Team and UMW combined resources to plan and promote the event. With publicity in print and social media and on many fliers, we were pleasantly surprised with about 70 attendees! We added chairs and made lots more copies of handouts. Thanks to all who helped make this educational event possible. Some have already mentioned having a follow up session.

United Methodist Women celebrate 150 years of mission and service this year! In honor of this milestone, Jane Crutchfield, Ellen Nickell, and Barbara Loftis wrote a brief history of our local unit and assembled a display with pictures and memorabilia. These were used to represent our unit at the Spring 2019 Spiritual Growth Retreat and our Spring District Meeting in Quiet Dell. You can view them in Linger Hall for the next couple weeks. First Church will celebrate at our June 6 meeting with a birthday party.

UMW is still collecting empty pill bottles with their lids through May 15. They will be shipped to Matthew 25 Ministries for inclusion in shipments with medical supplies worldwide. Be sure to wash and completely remove labels and sticky residue from prescription and non-prescription bottles. Place them in the box provided in Linger Hall at the UMW table.

Tuesday, May 7, is our annual spring basement sale. We need lots of help with set up on Monday May 6, selling May 7, and clean up May 8. Please sign up in Linger Hall or let Jane Crutchfield know how you can help. Gayle Lesure, deaconess and church and community worker, will present our unit meeting program, Women Responding and Serving in Christ's Name, on Thursday, May 2, 7 pm, in Fellowship Hall.



Attendees take a short break.



Jamie O'Brien, facilitator, gives instructions.



STRAWBERRY PAINTING CLASS

FUMC Youth will sponsor a painting class on

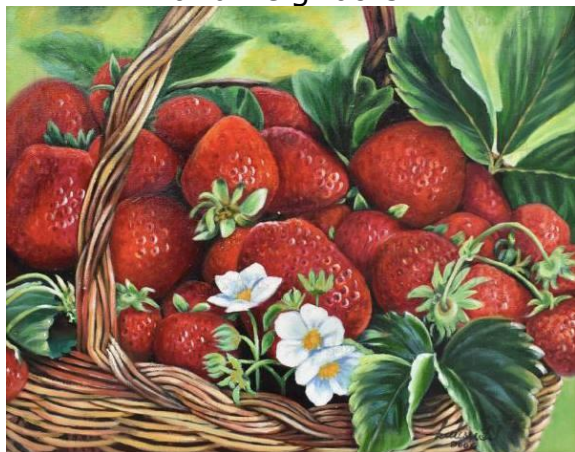
Sunday, May 5 at 2 pm in Godwin Fellowship Hall.

We will paint a strawberry image in preparation for festival.

Instructed by Charliena Helmick
benefits Youth Fund for Youth 2019 Conference in July

\$30 per person, includes all supplies needed

All are welcome – bring family, friends, and neighbors!



NOTE FROM THE MEADOWS

God has a wonderful way of surrounding us with compassion, especially when we need it the most. Martha and I extend to you our deep gratitude for the many expressions of sympathy and support during the recent loss of my step-mother, Ruby Meadows. Your kind and thoughtful expressions has continued to develop and increase our thankfulness for the First Church family. You have helped us to reflect on the miracle of life, those with whom we share the journey, and those who have gone on to the house of God. Again, Thank you for sharing the journey with us. Each one of you is a blessing to us and the Church family.

Be blessed. Steve and Martha

+ New App - If you're a "smartphone" or tablet user, and prefer it to a computer, then you can get the latest church information and the latest sermon on your device now. Go to your app store, and download and install "Sharefaith Ministry". Once installed on your device, search for "First United Methodist Church" within the app. The app does not have all the details you can find on the church website, but it is another way to stay informed. (Attached is a picture of the app to download.) See Danny Green with questions and more info.



N.O.W. May Meetings:

- *Nurture at 7 pm on May 13 in room 21
- *Outreach at 6 pm on May 20 in the library
- *Witness at 7 pm on May 20 in room 21

BAKERS NEEDED

Homemade Cookies are needed for the Jr. Royalty Parade during Strawberry Festival. FUMC will giveaway baggies of cookies to parade-goers on Thursday, May 16 at the Orion Strategies Office (Curtis Wilkerson's office), 33 W. Main Street, across from the courthouse. Bring cookies to the church kitchen by noon on Wednesday, May 15, and *please label if any contain nuts, peanut butter, are gluten free, etc.* If you can help give cookies away on the 16th, please let Kristi know.

.....

No Micah Meal in May.

Loose change offering benefits Youth 2019 Trip.



2019 Vacation Bible School
June 23 – 27 from 6-8 pm With
5:30 pm optional supper for kids
See SarahJean McGee or Kristi if are
available to help.

Dessert & More Auction: June 2!

The Micah Outreach Team will host a dessert (and more!) auction on June 2 in Godwin Fellowship Hall in conjunction with the June Micah Meal. All funds benefit C.O.M.E. – Celebration of Mission Event. *If you can provide a dessert or another auction item, please let Sandra Presar know (472-6012).*

MID-HIGH YOUTH GROUP

Meets May 19

6 – 7:15 pm at Sam's Pizza

Lectionary Readings for May:

May 5 Week: Acts 9:1-6; Psalm 30; Revelation 1:4-8; John 20:19-31

May 12 Week: Acts 9:36-43; Psalm 23; Revelation 7:9-17; John 10:22-30

May 19 Week: Acts 11:1-18; Psalm 148; Revelation 21:1-6; John 13:31-35

May 26 Week: Acts 16:9-15; Psalm 67; Revelation 21:10, 22-22:5; John 14:13-29



Special Invitation: You are invited for lunch each week on Mondays, Wednesdays and Fridays at the Parish House. Come and enjoy lunch and visit with our Neighbors, 11:30 am – 1 pm. Lunch is usually served around 12 noon.

FUMC received two thank you cards from B-U Middle School staff after receiving our gift of boxes of tissues. The cards said: "Thanks for the tissues!" and "Thanks for being so kind and thoughtful!"

The Upshur Parish's Annual
PENTECOST SING
Sunday, June 2 at the Jerry Run
Theater near Holly River



FYI: THERE'S A TOOOOOOON OF PEOPLE
DOWN THERE THANKING YOU THAT IT IS
FRIDAY

What do people see on your face?

Much of the public has an image of church people being serious, stern and in some cases, downright grouchy! What would it be like if the public saw us with smiles on our faces? Now, I don't mean we should put on some sort of fake, sickly-sweet smile (that is as big a turnoff as a stern face!) . I am talking about a genuine smile that comes from a place of deep joy. After all, we Christians do claim that it is Good News, so shouldn't our faces reflect that reality?

When we walk around with a smile it reflects a joyful soul. And of course the reverse is true. We have all been around people who seem to always have a furrowed brow and grim expression . We get drained by such people and try to get away from them. But imagine, if from a place grace and knowing we are God's beloved, we smiled more. Edward Hays, in his book Chasing Joy, talked about the practice of smiling that has a profound effect on us and others:

"Experiment with smiling frequently throughout your day; upon entering the supermarket and while shopping; waiting for stalled traffic to move again; or upon entering a room. Smile frequently also when you are working alone and see if you don't begin to experience the joy of life".

I imagine you see any number of people in the course of a week. What a gift you can give them with a smiling face and warm expression. In a world with less and less community, your effort to live joyfully can make all the difference. To quote Ed Hays once more: "To those hungry for welcome and acceptance, a smiling face is food and drink".

Go and feed someone this week with a smile and welcome spirit.

--from Paul Nickerson, Nickerson Coaching

First United Methodist Church has a daily "prayer web," **Circle of Prayer**.

If you would like to receive the daily listing of prayer concerns and the ongoing prayer concerns to include in your daily prayers and devotions, we would be glad to have you share in this vital prayer ministry.

Send your email address to: lwellings@mpl.com.

Or, if you have a prayer concern that we can include in our prayers, send your concern to crutchfield@wwwc.edu, or stevowvu@gmail.com.



IMAGINE...

IMAGINE First United Methodist Church responding to abundant blessings with generous giving.

IMAGINE First Church going beyond what we think we can do and living into unlimited possibilities.

IMAGINE First Church combining all of our gifts with those of more than 12 million United Methodists to be part of transforming God's world in the name of Jesus.

REMEMBER ...the Biblical account of the feeding of the multitude according to Mathew is one full of promise and possibility. What seemed impossible becomes possible through prophetic imagination.

Jesus empowers his disciples to feed the people. Everything the people needed was already in their midst.

IMAGINE...First Church living into a God-sized vision, confident that we already have the resources to accomplish it.

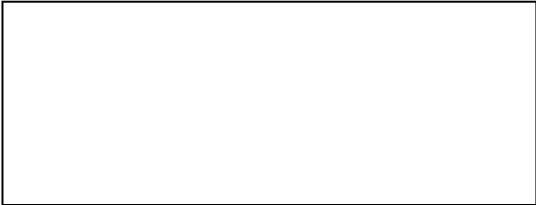
THANK YOU...for your inspired, faithful giving to First United Methodist Church!



Pastor Steve giving children's sermon on Easter



Congratulations to graduates Morgan, Nick, Mike and Shin!



52 S. Florida St.
Buckhannon WV 26201
firstchurchum.com